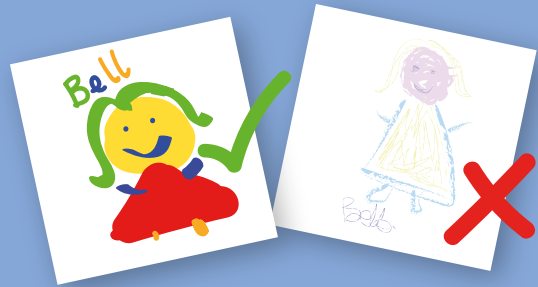



# Digital Artwork Preparation

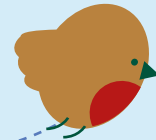


**stuart  
morris**

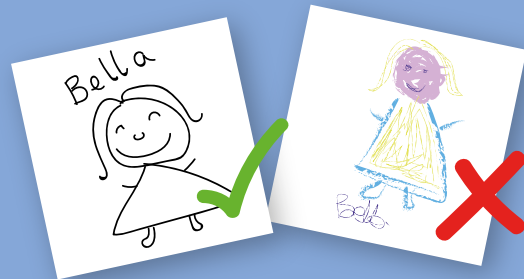
 **FULL COLOUR Designs Step 1.** The participants draw their masterpieces onto white paper. Go wild with colour! Use felt tip pens, paints or even photographs for your designs! Be as bright and as colourful as possible, as **faint designs will fail to reproduce**. Hand and footprints can also be produced in paint.




 **TIP:** Use the layout guides under each product throughout the brochure to assist with the size of portraits!





 **One or Two Colour Designs Step 1.** The participants draw their masterpieces onto white paper. Please only use a black fibre tip pen for drawings or black paint for hand and foot prints. Please **DO NOT USE** Pencil, Biro, coloured pens/paints as these will fail to re-produce. Ensure that all drawings and names are clear.





 **Step 2.** Scan or photograph the images so that you have them digitally. Participants can do this using a camera phone and emailing them to you if they are at home. Please ensure photographs are taken in a strong natural light, and are not too small or blurry.



 **Step 3.** Resize the images to the correct size (see guidelines on following pages) using a software such as photoshop, paint or similar, ensuring that the images are high resolution and not blurry.


 **TIP:** You will find with the photographed images will have variances in the backgrounds from shadowing. We are able to get rid of this for you as long as the drawings stand out well from the background.

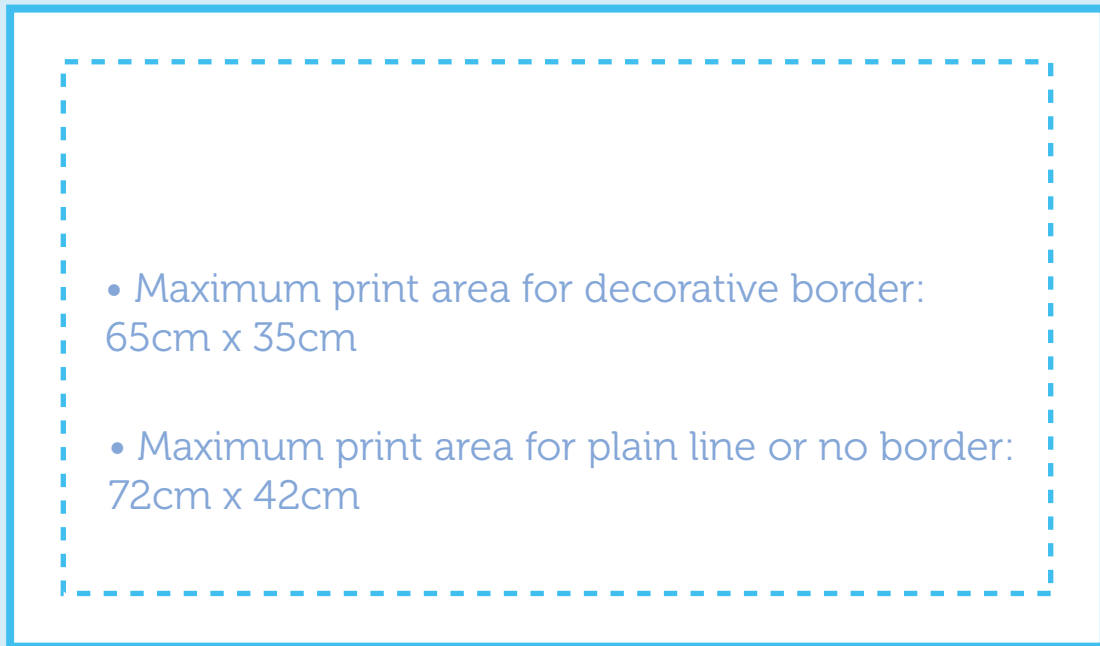
 **Step 4.** Layout your designs at the correct size (see guidelines on following pages) using a programme such as photoshop (or similar). Please save your design as a high resolution .pdf ensuring all drawings are clear. Send the layout along with your completed order form to us via email, or if too big, WeTransfer/Dropbox to [sales@stuartmorris.co.uk](mailto:sales@stuartmorris.co.uk)

 **Step 5.** Once we receive your order we will send you an order confirmation. A design proof will be sent to you within 7-10 working days of us receiving the design. **YOU MUST** send us an approvals email before we can proceed to print. Please allow 4 weeks from your approval of the design, to delivery of order. Invoice by email will follow shortly after dispatch.



# Tea Towels

 If you would like a decorative border, layout your images upto the maximum print area of: 65 x 35cm. If you do not require a border or would like a plain line border, place your images up to the maximum print areas 72cm x 42cm.



## Size per portrait guide

	With Decorative Border				With Plain Line Border	
Number of Drawings	50	100	150	200	250	300
Picture Size (head only)	5.5cm x 5.5cm	4cm x 4cm	3.5cm x 3.5cm	3cm x 3cm	3cm x 3cm	2.5cm x 2.5cm
Picture Size (head & body)	5cm x 8cm	3cm x 5.5cm	2.5cm x 4.5cm			

# Lightweight Cotton Bags / Canvas Bags



Layout your images upto the maximum print area of: 30 x 32cm.

Please place your artwork within 30cm x 32cm.

## Size per portrait guide (each side)

Number of Drawings	20	30	40	50	60	
Picture Size (width x height)	6.5cm x 6cm	5cm x 5cm	5cm x 4cm	4cm x 4cm	3.5cm x 4cm	

# Extra Wide Bag



Layout your images upto the maximum print area of: 36 x 32cm.

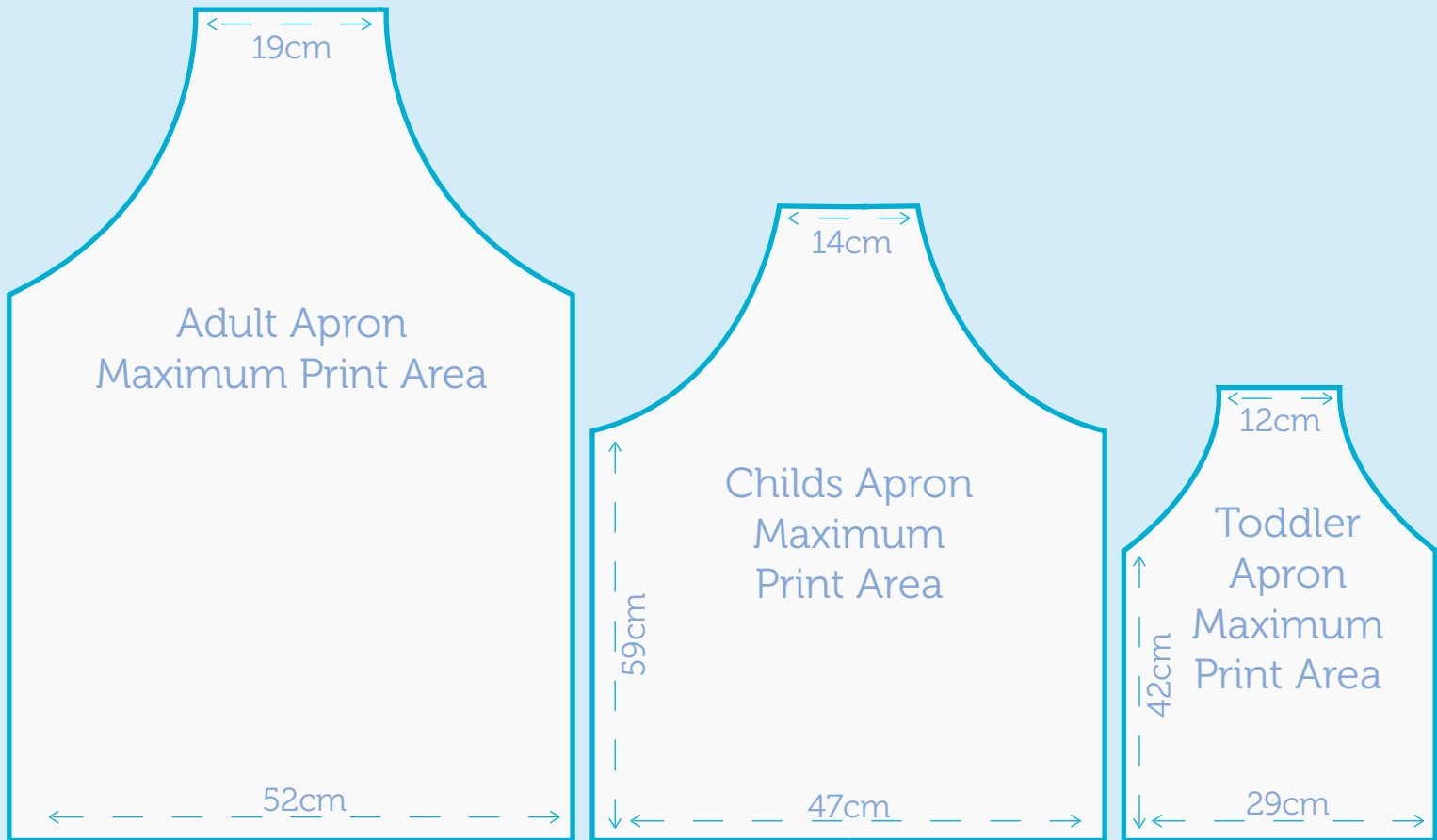
Please place your artwork within 36cm x 32cm.

## Size per portrait guide (each side)

Number of Drawings	50	60	75	85	95
Picture Size (width x height)	4.5cm x 4.5cm	4.5cm x 4cm	3.5cm x 4cm	3.5cm x 3.5cm	3.5cm x 3.2cm

# Aprons

🌸 Layout your images upto the maximum print area of your required size apron. See below.



Size per portrait guide

Number of drawings		50	100	150	200
Picture Size	Adult	7x7 cm	5x5 cm	4x4 cm	3x3 cm
	Child	6x6 cm	4x4 cm	3.5x3.5 cm	
	Toddler	3.5x3.5 cm			